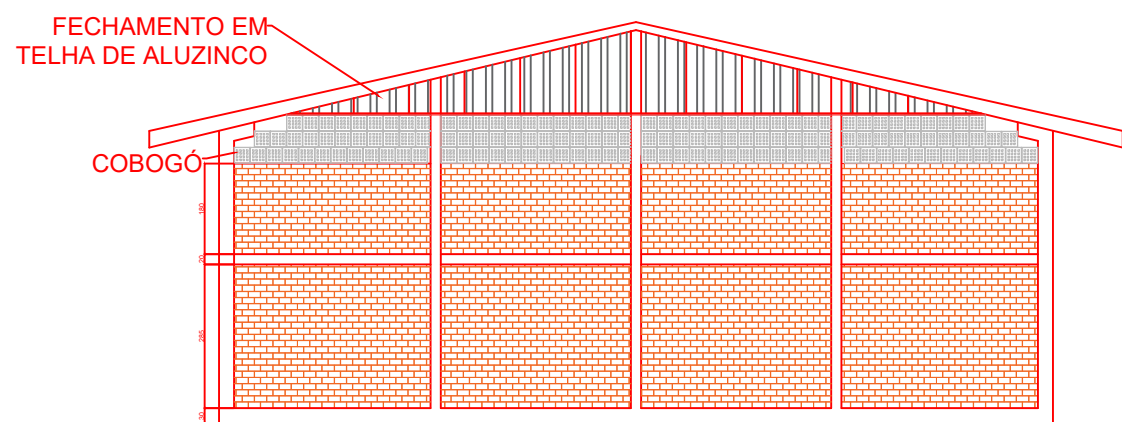
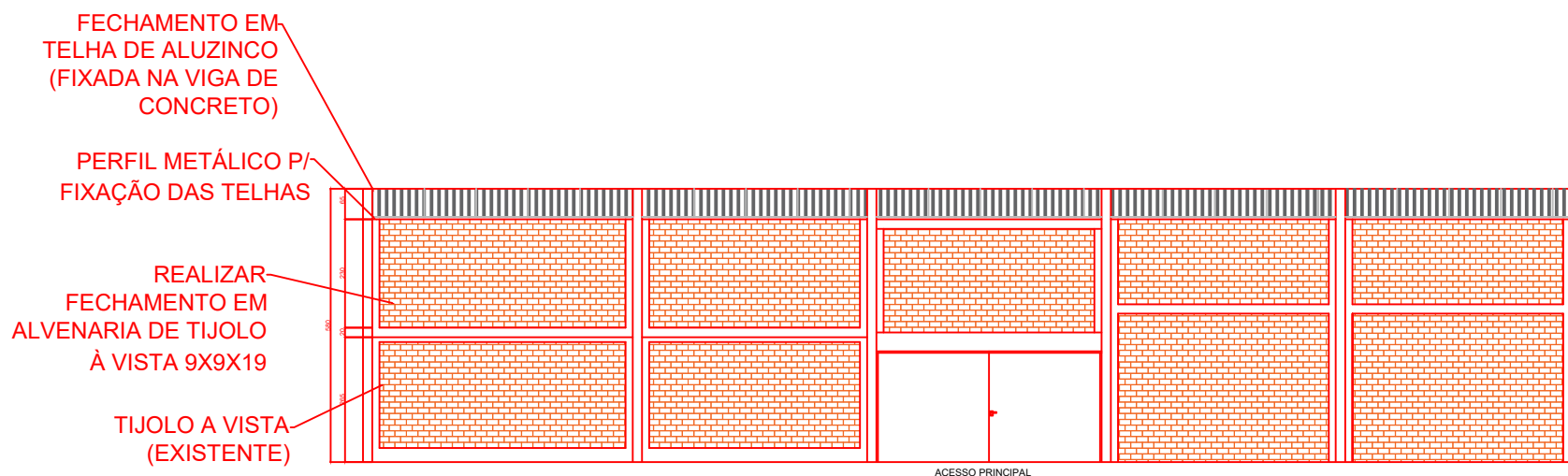


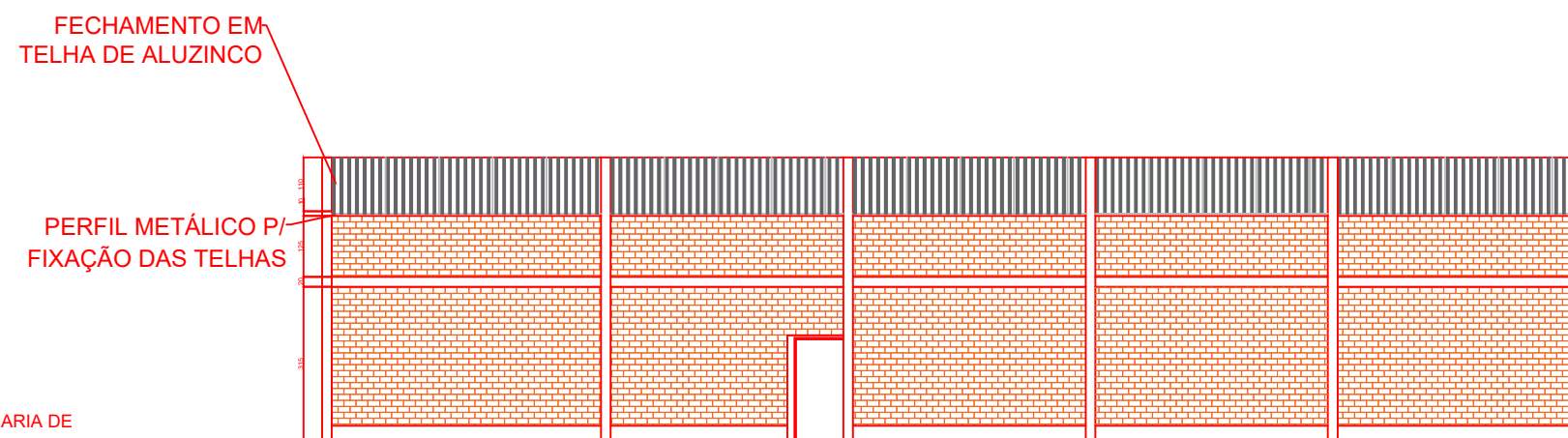
VISTA LATERAL 3 (EXISTENTE)  
Esc.: 1/20



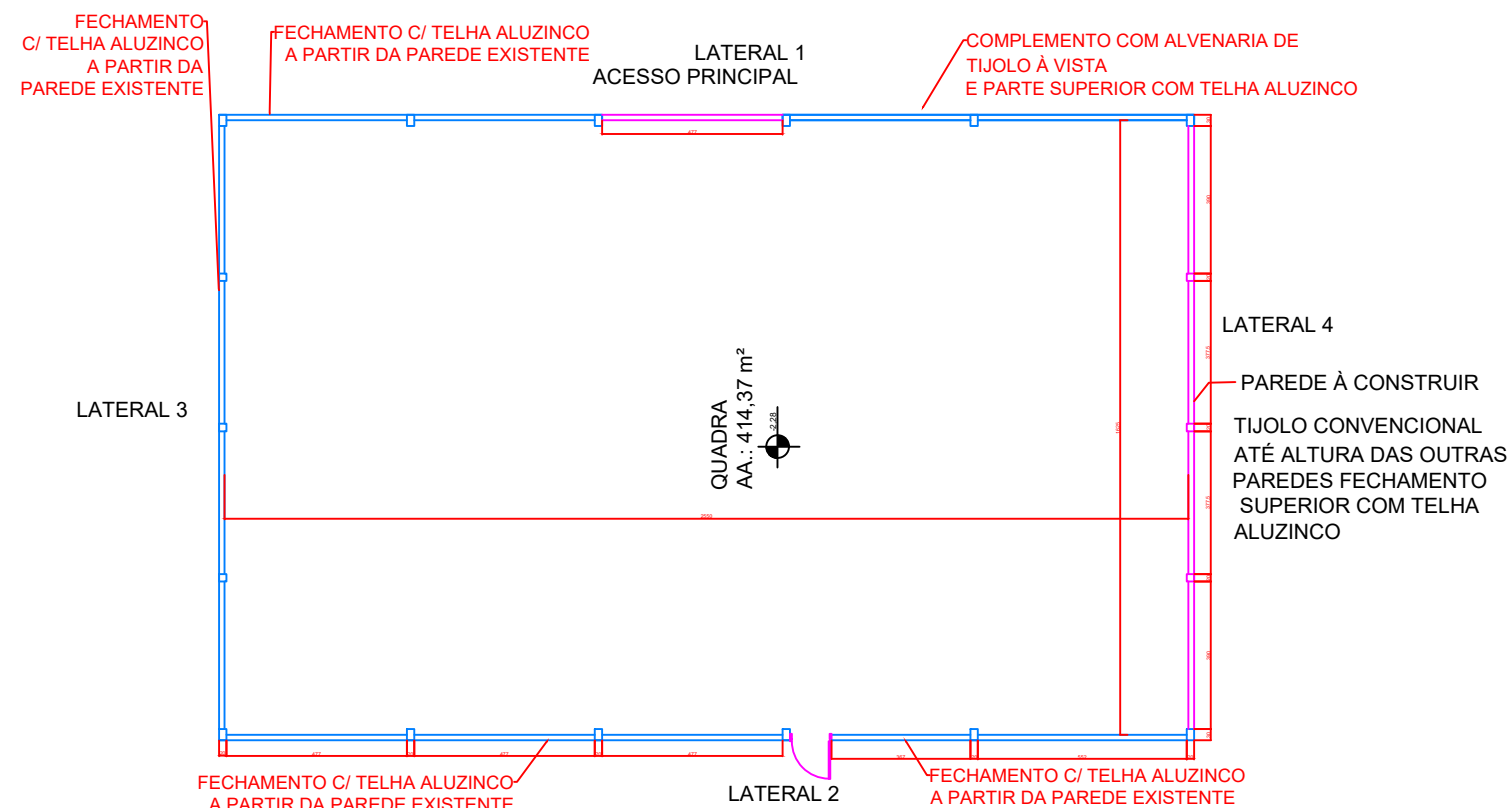
VISTA LATERAL 4 (À CONSTRUIR)



VISTA LATERAL 1



VISTA LATERAL 2



PLANTA BAIXA - QUADRA  
Esc.: 1/10

PREFEITURA DE  
**LAGES**  
SECRETARIA DA EDUCAÇÃO

Endereço:  
Rua Jerusalém, 524 - Vila Mariza  
Lages - SC, 88524-600

Desenho: Eduarda Aparecida Oliveira Lemos

DATA 15/04/2026

PRANCHAS

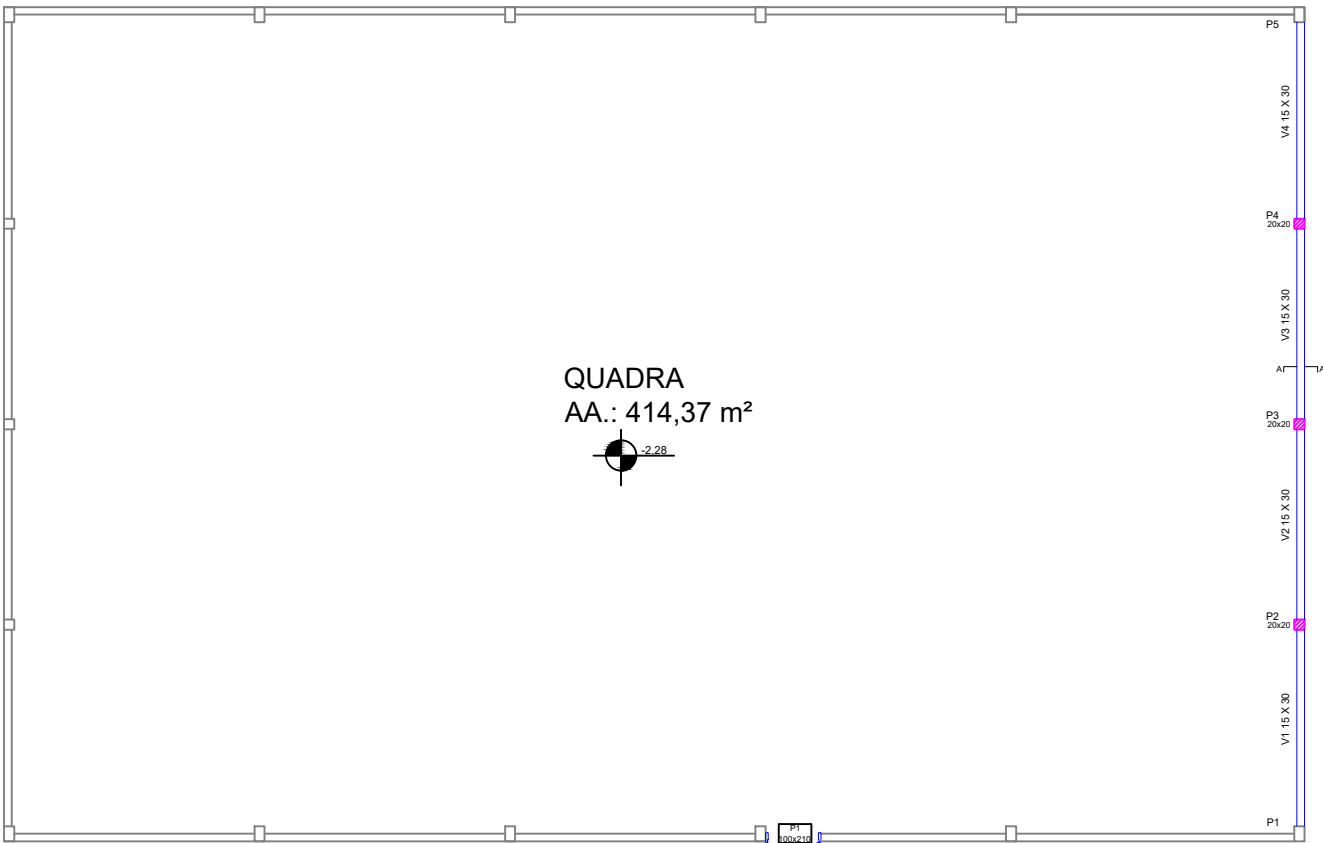
01  
ARQ

01  
ARQ

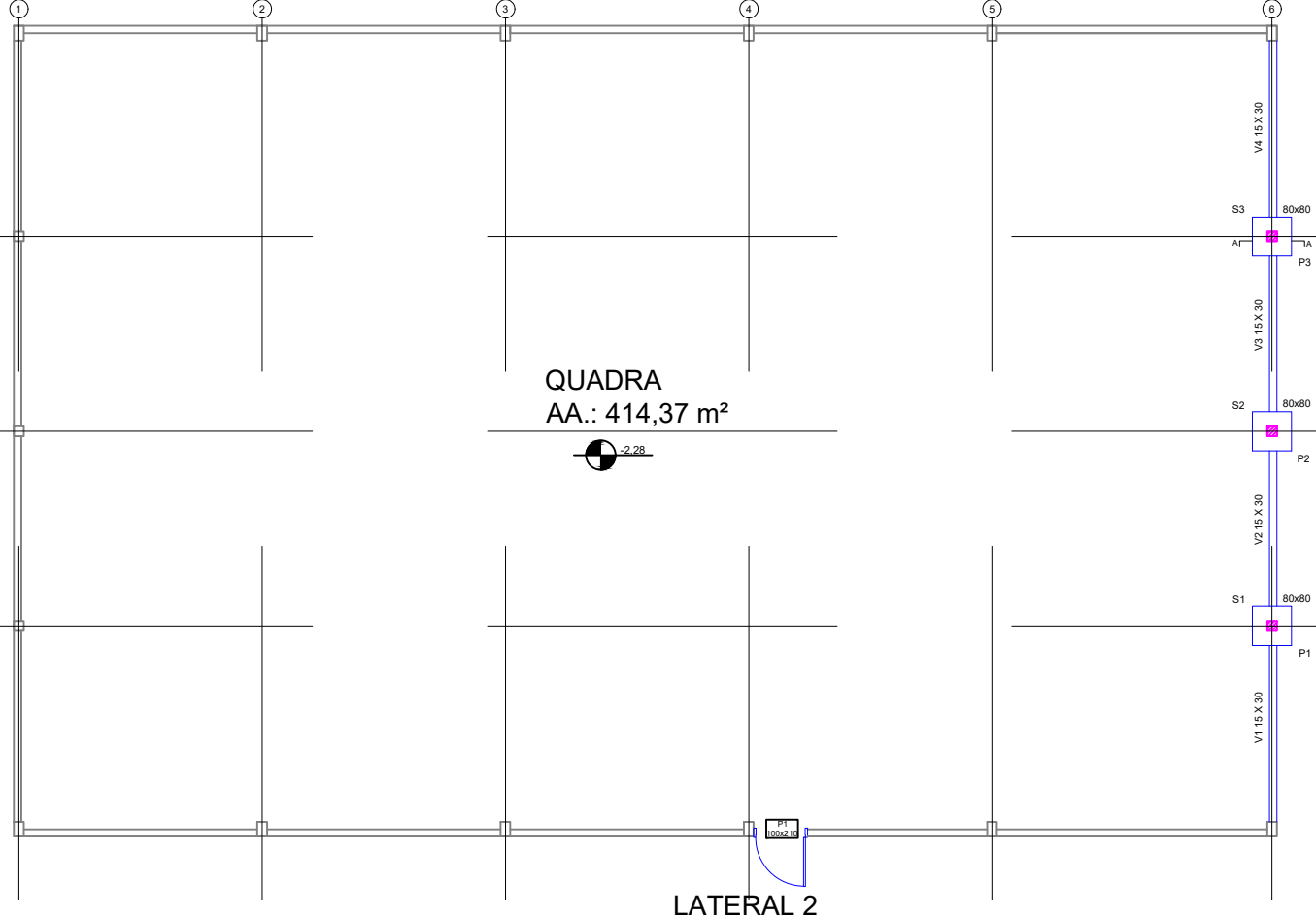
DADOS DO PROJETO  
PROJETO BÁSICO ARQUITETÔNICO - FECHAMENTO DA  
QUADRA DA EMEB PROFESSORA FAUSTA RATH

CONTEÚDO DA PRANCHA  
- PLANTA BAIXA - ESC 1/200  
- VISTAS LATERAIS - ESC 1/200

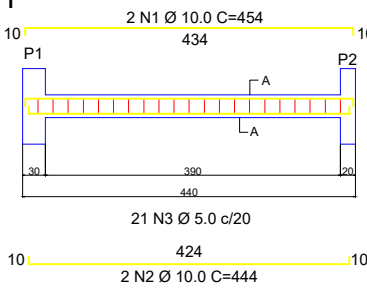
VIGA BALDRAME  
ESC 1:150



PLANTA FUNDAÇÃO  
ESC 1:150

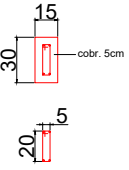


V1



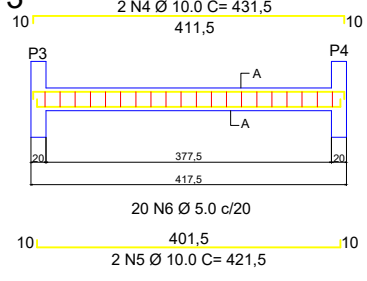
21 N3 Ø 5.0 c/20

SEÇÃO A-A  
ESC 1/50



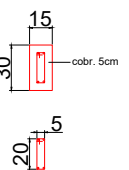
20 N6 Ø 5.0 c/20

V3



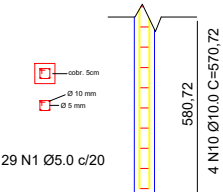
20 N6 Ø 5.0 c/20

SEÇÃO A-A  
ESC 1/50



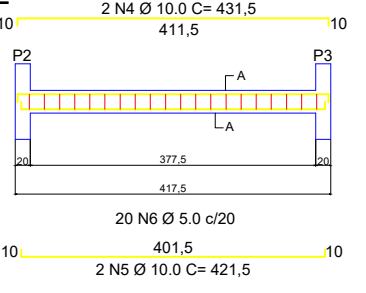
21 N3 Ø 5.0 c/20

SEÇÃO A-A  
ESC 1/75

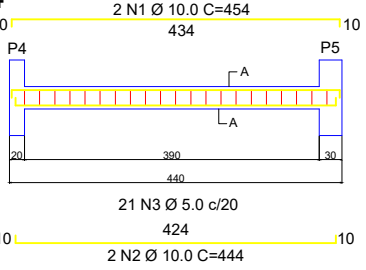


P1=P2=P3  
20X20

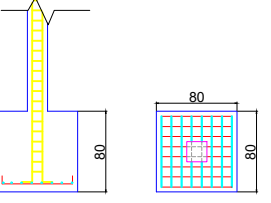
V2



V4



SEÇÃO A-A  
ESC 1/75



PREFEITURA DE  
**LAGES**  
SECRETARIA DA EDUCAÇÃO

Endereço:  
Rua Jerusalém, 524 - Vila Mariza  
Lages - SC, 88524-600  
Desenho: Eduarda Aparecida Oliveira Lemos

DATA 15/04/2026

PRANCHAS

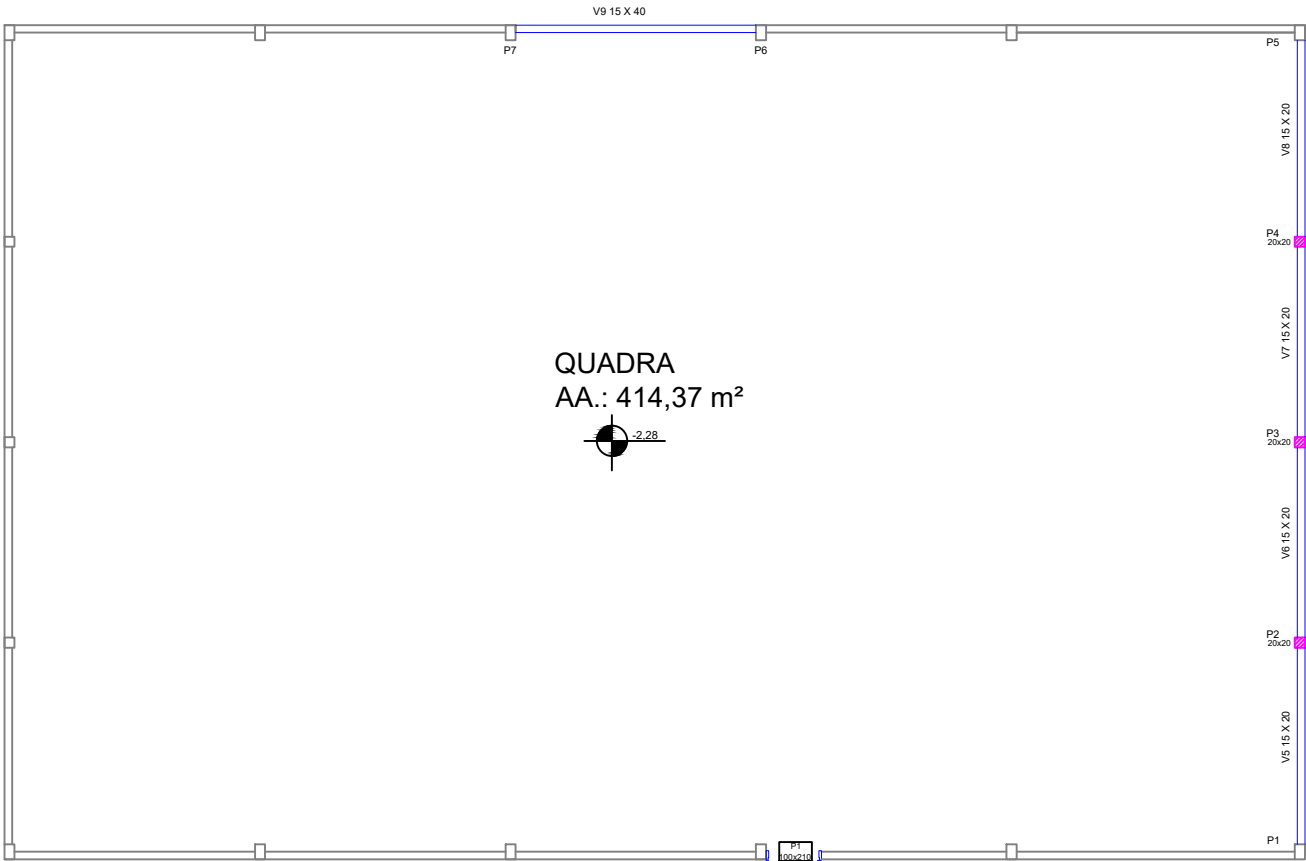
01  
EST  
02  
EST

DADOS DO PROJETO  
PROJETO BÁSICO ARQUITETÔNICO - FECHAMENTO DA  
QUADRA DA EMEB PROFESSORA FAUSTA RATH

CONTEÚDO DA PRANCHA  
- PLANTA DE FORMA BALDRAME - ESC 1/150  
- DETALHAMENTO VIGAS BALDRAME - ESC 1/100  
- PLANTA DE FORMA SAPATA - ESC 1/150  
- DETALHAMENTO SAPATAS E PILARES - ESC 1/75

PLANTA DE VIGAS

ESC 1:150

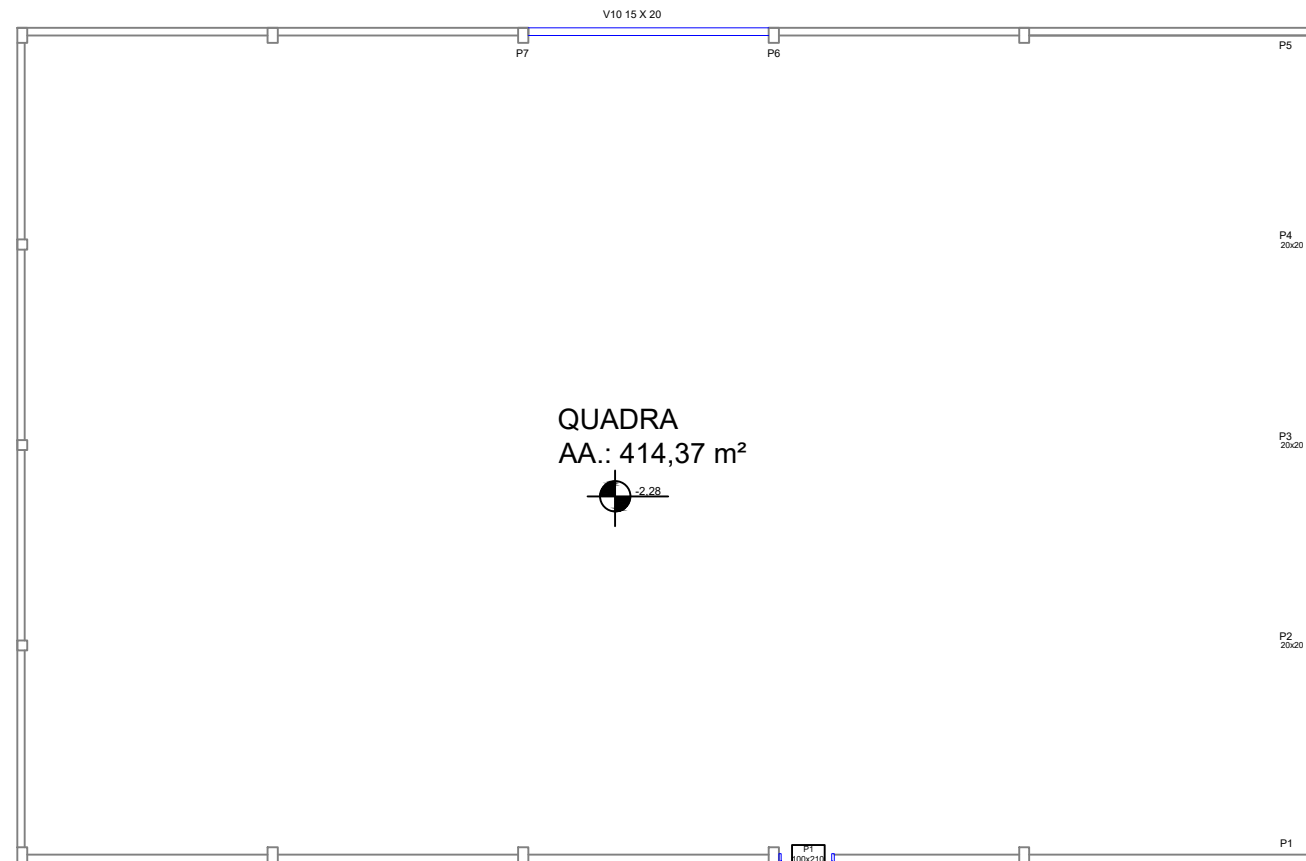


QUADRA  
AA.: 414,37 m²

LATERAL 2

PLANTA DE VIGAS

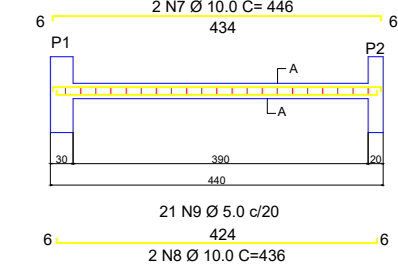
ESC 1:150



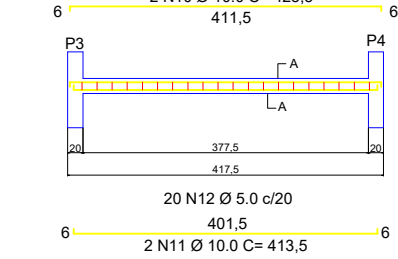
QUADRA  
AA.: 414,37 m²

LATERAL 2

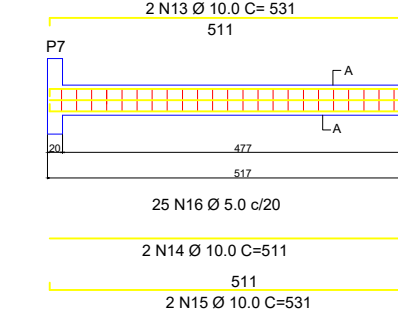
V5



V7

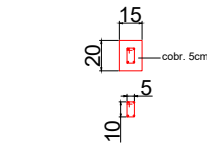


V9



SEÇÃO A-A

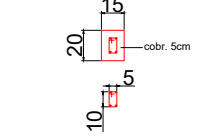
ESC 1/50



21 N9 Ø 5.0 c/20

SEÇÃO A-A

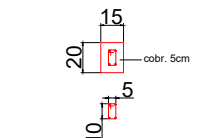
ESC 1/50



20 N12 Ø 5.0 c/20

SEÇÃO A-A

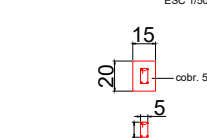
ESC 1/50



20 N12 Ø 5.0 c/20

SEÇÃO A-A

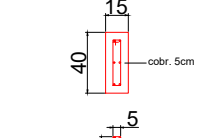
ESC 1/50



21 N9 Ø 5.0 c/20

SEÇÃO A-A

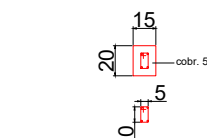
ESC 1/50



25 N16 Ø 5.0 c/20

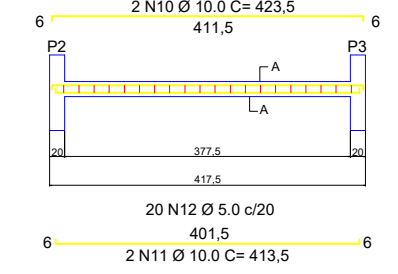
SEÇÃO A-A

ESC 1/50

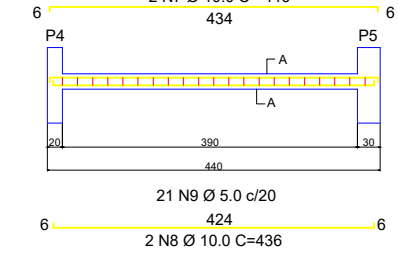


25 N19 Ø 5.0 c/20

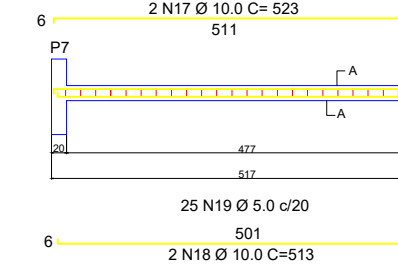
V6



V8



V10



PREFEITURA DE



SECRETARIA DA EDUCAÇÃO

Endereço:

Rua Jerusalém, 524 - Vila Mariza  
Lages - SC, 88524-600

Desenho: Eduarda Aparecida Oliveira Lemos

DATA 15/04/2026

PRANCHAS

02  
EST

02  
EST

DADOS DO PROJETO  
PROJETO BÁSICO ARQUITETÔNICO - FECHAMENTO DA  
QUADRA DA EMEB PROFESSORA FAUSTA RATH

CONTEÚDO DA PRANCHA  
- PLANTA DE FORMA BALDRAME - ESC 1/150  
- DETALHAMENTO VIGAS BALDRAME - ESC 1/100  
- PLANTA DE FORMA SAPATA - ESC 1/150  
- DETALHAMENTO SAPATAS E PILARES - ESC 1/75